



TAITO CITY LIFE NEWS

Published by: Human Rights and Diversity Promotion Section, General Affairs Division, Taito City Office
4-5-6 Higashi-Ueno, Taito-ku 110-8615, Tel: 03-5246-1116

2025.06 Vol. 39

https://www.city.taito.lg.jp/kurashi/foreigner/jigyoannai/life_news.html

The City Office offers multilingual interpretation services via tablet devices. Please inquire about this at the service window you visit for procedures.

The hours these services are available differ depending on the language.

<https://www.city.taito.lg.jp/kurashi/foreigner/sodan/sodan.html>

Supported languages: English, Chinese, Korean, Spanish, Portuguese, Vietnamese, Nepali, Filipino (Tagalog), Thai, French, Russian, Hindi, Indonesian, Khmer, Burmese and Malay.



Please check the hours these services are available here



Be Careful of Heatstroke

Symptoms of heatstroke include dizziness, headache and nausea, and in severe cases it can lead to the loss of consciousness and convulsions, which can be life-threatening. While heatstroke is most likely to occur between June and July when your body is not yet accustomed to the heat, you should be on alert until September or later. Remind others to be careful to prevent heatstroke together.

▽ Points for preventing heatstroke

- ① Drink water and replenish your sodium levels regularly
- ② Take frequent breaks in shaded areas whenever possible
- ③ Wear cool clothes and use a parasol or hat
- ④ On hot days or when you don't feel well, don't push yourself too hard



▽ If you experience heatstroke

- ① Move to a shaded area or an air-conditioned room
- ② Loosen your clothes and take it easy
- ③ Cool your neck, armpits and groin area with a wet towel, etc.
- ④ Drink water and keep your sodium levels up

Note: If your condition does not improve, please seek medical attention immediately.



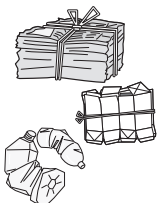
Please scan this code for more details.

Follow the Garbage Disposal Rules!

► How to Dispose of Your Garbage

1. Separate your garbage into recyclable items, plastics*, burnable garbage, unburnable garbage and large-sized garbage
2. Take your garbage out on the proper collection day, depending on the type of garbage and the region where you live
3. Bring your garbage to the designated location by the place you live by the designated time
Put your garbage out by 8 a.m. on the day of disposal. You cannot put it out the day before.
Dispose of recyclable items at the collection area. Plastics and other types of garbage are collected individually at each building.

- Notes:**
1. Please contact the Taito City Waste Collection Office to receive a recyclable items and garbage collection calendar.
 2. If you have lithium-ion batteries and/or mobile batteries, please contact the retailer to ask if they collect those items.



Recyclable items



Plastics*



Burnable garbage



Unburnable garbage

Large-sized garbage

Furniture, suitcases, rugs/carpets, futon/blankets, etc.



You must apply with the Large-size Waste Reception Center

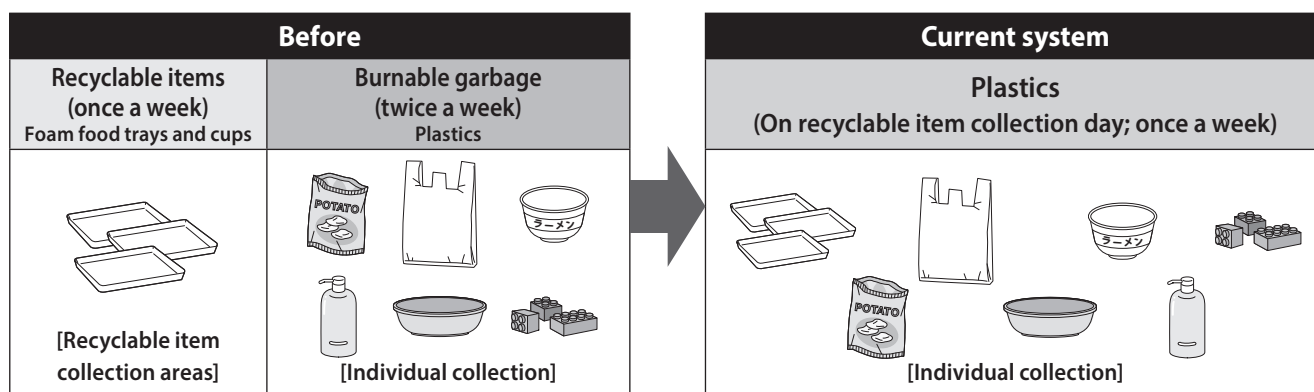
*For more information about the collection of plastics, please see the article on the next page.

Sorting and Collection of Plastics Has Started Throughout Taito City

Plastic items that were once collected as **burnable garbage** and incinerated at incineration plants—as well as foam food trays and cups that were collected as **resources**—are now collected as **plastics**.

► Sorting and Collection of Plastics

Dispose of plastics in front of your building, by 8 a.m. on the collection day for recyclable items (individual collection; same location as burnable and non-burnable garbage). Please do not dispose of plastics at the recyclable item collection areas.



- Notes:**
1. Continue to dispose of PET bottles (remove caps and labels) at the resource collection areas.
 2. Rinse soiled items with water or wipe it with a cloth or the like.
 3. Dispose of plastics that are stained/dirty or have a strong odor as burnable garbage.

Please visit the Taito City website for more information
(fliers in foreign languages are also posted on the website).



► Fee

You can dispose of recyclable items, plastics, burnable garbage and unburnable garbage from households for free.

Notes:

1. If you dispose of four or more 45-liter bags of garbage at one time, you will be charged a fee starting from the fourth bag.
2. A fee is required to dispose of recyclable items, plastics, burnable garbage and unburnable garbage from businesses such as stores, private lodging facilities, and offices.

► Large-sized Garbage (Limited to household items only. Items from businesses are not collected.)

Large-sized garbage is collected on a reservation basis, and fees are charged for pickup. You can make a reservation for this with the Large-size Waste Reception Center. Please make your reservation via the Internet or by telephone. Internet reservations can be made in Japanese, English, Chinese and Korean.

● Large-size Waste Reception Center

URL: <https://ecolife.e-tumo.jp/taitosodai-u/>

Tel: 03-6747-5111 (Monday through Saturday, 8 a.m. to 7 p.m.)



Purchase Large-sized Garbage Disposal Tickets and attach them to your items before disposal.

SAMPLE



Inquiries:

【For recyclable items and plastics】

Waste & Recycle Section, **Tel:** 03-5246-1291

【For burnable, unburnable and large-sized garbage】

Taito City Waste Collection Office, **Tel:** 03-3876-5771

(Monday through Saturday, 8:30 a.m. to 4 p.m.)

Inquiry hours: 8:30 a.m. to 5 p.m. except for Saturdays, Sundays, national holidays and during the year-end/New Year's holiday period (unless otherwise stated)

Ask Questions 24/7!

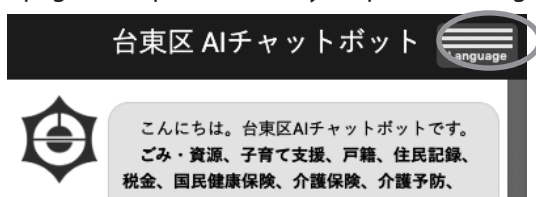
► Try the AI Chatbot

How to Use

- (1) Click the mark at the bottom right of the Taito City website.



- (2) Click the "Language" button on the upper right of the page that opens. Choose your preferred language.



- (3) Ask a question.

Languages available: English, Chinese (simplified and traditional), Korean, Vietnamese, Filipino (Tagalog), Nepali, Thai, French, Burmese, Uzbek, Indonesian, Russian, Mongolian, Ukrainian

Inquiries: Public Relations Section

Tel: 03-5246-1023

Please Have a Look at the Taito City Newsletter



Various notifications from the Taito City Office are written in the Taito City newsletter.

The newsletter can be viewed in various languages, such as English, Chinese (simplified and traditional),

Korean, Thai, and Indonesian if viewed from the city website or smartphone application "Catalog Pocket."

Note: To read via Catalog Pocket, search for "Taito City" after scanning the two-dimensional code and downloading the app.

Inquiries:

Public Relations Section

Tel: 03-5246-1021



Android



iOS

Taito City's Website Is Viewable in Various Languages

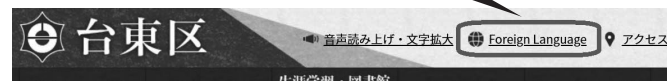
The Taito City website can be viewed in 109 languages.

Languages: English, Chinese (simplified and traditional), Korean, French, Indonesian, Malay, Thai, etc.

► Procedure

1. Click the "Foreign Language" button on the upper right side of the website

"Foreign Language" button



2. Choose a language

Inquiries: Public Relations Section,

Tel: 03-5246-1021



View the Taito City Official YouTube Channel

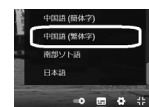
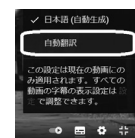
The public relations programs (news) and other videos the city produces are streaming on YouTube. You can display subtitles using YouTube's automatic translation function:



- (1) Click on the caption  button on the bottom right of the video.



- (2) Click on the  button, click on "Subtitles/CC," and then select "automatic translation" and choose a language.



Notes:

1. Only English-language translations are available when playing videos on smartphones and the like.
2. Since the channel uses YouTube's automatic translation function, the translation may not be accurate.
3. Depending on the video, the automatic translation function may not be available.

Inquiries: Public Relations Section, **Tel:** 03-5246-1041

Service Counters Open on Second Sundays for Partial Services

Hours: 9 a.m. to 5 p.m.

Location: Taito City Office 1F

Services available:

- Matters related to family registry notifications
- Issuance of residence records, personal seal registration certificates, and family registry certificates
- Matters related to notifications of moving in/out and National Health Insurance enrollment
- Matters related to personal seal registration and annulment
- Payments for taxes or health insurance premiums and matters related to motorcycle registration
- Matters related to various childrearing allowances and medical subsidies for children
- Matters related to applications for and issuance of Individual Number cards
- Matters related to applications for and issuance of special permanent resident certificates
- Consultation on tax payments and health insurance premiums
- Matters related to issuance of residence tax (tax exemption) certificates
- Matters related to issuance of a *Mother and Child Health Handbook*
- Sales of one-month ticket, coupon tickets and one-day ticket for the Taito City Circular Route Bus, Megurin

Searching for a Hospital?

◆ Phone

You can search for a hospital through Himawari—the Tokyo Metropolitan Health & Medical Information Center.

Languages: English, Chinese, Korean, Thai and Spanish

Hours: 9 a.m. to 8 p.m. **Tel:** 03-5285-8181

◆ Online

You can search for a hospital through the Medical Information Net (NABII).

(Available in English, Chinese and Korean.)
<https://www.iryuu.teikyouseido.mhlw.go.jp>



You can also access the website by scanning this code.

Taito City Night & Holiday Children's Clinic

Medical treatment is available for children fifteen years of age or younger for sudden illnesses that can be handled without hospitalization.

Location: Inside Eiju General Hospital, 2-23-16 Higashi-Ueno, Taito-ku

Tel: 03-3833-8381

Note: Please come to the emergency reception desk on the first floor.

Hours:

- Monday through Saturday (except on national holidays and during the yearend/New Year's holidays): 6:45 to 9:45 p.m. (treatment from 7 to 10 p.m.)
- Sundays, national holidays, *Obon* holidays (August 14–16), and during the year-end/New Year's holidays (December 29 to January 3): 8:45 a.m. to 9:45 p.m. (treatment from 9 a.m. to 10 p.m.)

Note: Since you may be directed to a specialized medical facility, please be sure to call in advance.



You can also access the website by scanning this code.

Some Service Counters Have Extended Hours on Wednesdays

Extended hours: Until 7 p.m.

Available service counters:

Taito City Office (4-5-6 Higashi-Ueno, Taito-ku)

1F: ○ Family Registration Residents' Service Section

2F: ○ Nursing Care Insurance Section

○ Senior Citizens' Welfare Section

○ Handicapped Welfare Section

○ National Health Insurance Section

3F: ○ National Pension Subsection, Residents' Affairs Section

○ Collection Section ○ Tax Administration Section

6F: ○ Child-Rearing & Youth Support Section

○ After-School Affairs Subsection ○ Child Care Section

Residents' Offices

○ Seibu (West) Residents' Office (3-1-30 Shitaya, Taito-ku)

○ Nambu (South) Residents' Office (1-10-12 Kotobuki, Taito-ku)

○ Hokubu (North) Residents' Office (4-48-1 Asakusa, Taito-ku)

Those Who Want to Study Japanese

There are volunteer groups in Taito City that will help you study the Japanese language. You don't need to register or make a reservation; just check the schedule and show up at the time and place the group is meeting. For more information, please visit the city website.

Note: We are also recruiting Japanese-language instructors and other staff.



Please scan this code for more details.

Consultation about Life in Japan

► Foreign Residents' Consultation Center

If you have any problems or concerns, please feel free to consult the Foreign Residents' Consultation Center.

You can talk to a consultant directly on the following days.

Language	Days	Hours
Chinese	First, second and third Thursdays	10 a.m. to noon
English	First and third Thursdays	10 a.m. to noon
Korean	First and third Thursdays	2 to 4 p.m.

Location: Residents' Consultation Office (Taito City Office 1F)

Inquiries: Residents' Consultation Office, Residents' Counseling Section

Tel: 03-5246-1025

Inquiry hours: 8:30 a.m. to 5 p.m. except for Saturdays, Sundays, national holidays and during the year-end/New Year's holiday period (unless otherwise stated)

Come Read Books and Other Materials Written in Foreign Languages and Simple Japanese

Municipal libraries in Taito City have books written in both Japanese and foreign languages. They have a wide variety of materials, such as books introducing Japan, foreign-language editions of famous Japanese titles, and Japanese-language study books for foreign residents.

You can also borrow all materials on the shelves.

Please note that Central Library will be closed from September 1, 2025 to the end of November 2026 (subject to change) for renovation work. For more information, please see the "FAQ regarding the temporary closure of Central Library."

Inquiries:

Central Library, **Tel:** 03-5246-5911

Monday to Saturday, 9 a.m. to 8 p.m.; Sundays, 9 a.m. to 5 p.m. (excluding the year-end/New Year's holidays, every third Thursday of the month, and during special maintenance periods)

Note: A temporary service window will open on September 8, 2025 on the sixth floor of the Taito City Lifelong Learning Center (subject to change).

The phone number will stay the same.



Please scan this code for more information about the temporary closure.



To search for books



Central Library Asakusabashi Branch (International Section)

About Child Allowances

► What Is a Child Allowance?

A child allowance is a subsidy provided to residents of Taito City who are raising children between birth and the third year of high school (the first March 31 after the child turns eighteen years of age). You must apply to receive a child allowance.

► Monthly Allowance

The amount of the allowance depends on the number of children you have and their age(s).

► Starting Date for Payments

As a general rule, allowances are paid from the month following the month of application.

Payments are made at the beginning of even-numbered months (February, April, June, August, October, December; each payment is for two months). If your application is late, no retroactive payment will be made.

Inquiries: Child-Rearing & Youth Support Section

Tel: 03-5246-1232

Challenge Loan Program for Students Preparing for Entrance Exams

This program provides interest-free loans for cram school fees and entrance examination fees for students (third year of junior high school or high school, etc.) living in Tokyo. Students do not need to repay these loans if they complete the necessary procedures after advancing to higher education.

Cram school fees: Up to 300,000 yen

Entrance exam fees:

Junior high school students (for high school entrance exams): Up to 27,400 yen

High school students (for college entrance exams): Up to 120,000 yen

Eligibility:

- (1) Must have lived in Tokyo continuously for at least one year.
- (2) The income of the caregiver must be within the requirements. (Income will be verified through tax certificates.)

Note: There are other requirements such as residency status and amount of savings.

Please inquire for more information.

Inquiries:

Daily Life Support Desk,
Taito City Council of Social Welfare

Tel: 03-5828-7547



Your Resident Tax Amount Has Been Decided

What Is Resident Tax?

Resident tax is like a membership fee that you pay to live in the community. Even if you are a foreign resident, if you live in Japan as of January 1 and earned a certain amount of income during the previous year, you are required to report your income and pay the resident tax.

About Resident Tax Amount Notifications

The city calculates the amount of tax you owe based on your reported income or a notification from your employer regarding the salary you were paid. The city then notifies you by either method (1) or (2) below:

(1) Mailed to your home (normal levy: yearly amount divided into four installments)

1. Please confirm the tax amount and payment deadlines on the tax notification and payment statements we send you.
2. In addition to convenience stores, the city office, financial institutions and post offices, you can use payment apps for smartphones.

(2) Mailed to your place of employment (special levy: yearly amount divided into twelve installments)

1. You will receive the tax amount notification from your place of employment.
2. Your place of employment will deduct the amount of tax you owe from your monthly salary and make the tax payments on your behalf.

For matters related to tax calculation and collection methods (individual payment, deduction from payroll):

Taxation Subsection, Tax Administration Section, **Tel:** 03-5246-1103 to 1105

For matters related to electronic payment (credit card, etc.) and bank transfer procedures:

Tax Administration Subsection, Tax Administration Section, **Tel:** 03-5246-1114

About Resident Tax Certificates

For official procedures such as changes of visa status, a residence tax (tax exemption) certificate or taxation certificate to verify income may be necessary.

The municipality administering your address as of January 1 each year will issue these certificates.

Example Where to get certificates for 2025 issued

⇒ Office of the municipality administering your address on January 1, 2025

Where to get certificates for 2024 issued

⇒ Office of the municipality administering your address on January 1, 2024

Notes: 1. You can obtain these certificates if you have declared your income or if your employer reported it to the tax authorities.

2. There is a handling fee for this service.

For matters related to certificates: Tax Administration Subsection, Tax Administration Section, **Tel:** 03-5246-1101

If You Have Trouble Paying Your Taxes

Please contact us immediately for advice if you have trouble making payments within the deadline.

For matters related to payment consultation: Collection Section,

Tel: 03-5246-1107

